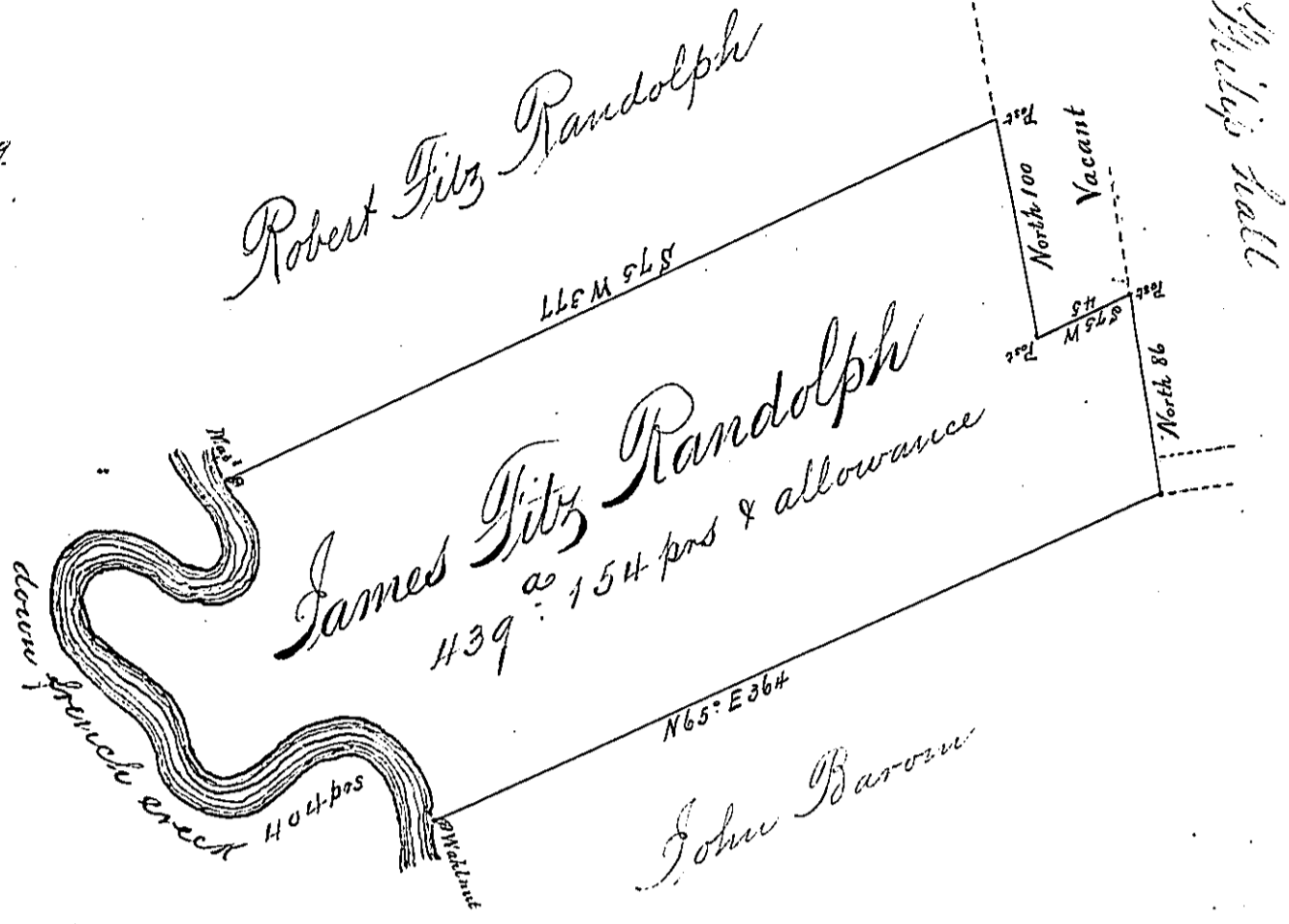


River courses beg^d
 Maple
 S 18° E 11
 S 35° E 9
 S 14 1/2° W 36
 S 62 1/2° W 10
 N 79 1/2° W 18
 N 61 1/2° W 12
 N 43° W 19
 N 59° W 13
 S 83° W 11
 S 18° W 18
 S 26° E 27
 S 54° E 30
 S 17° E 26
 S 10° E 16
 S 51° E 20
 N 60° E 48
 S 77 1/2° E 21
 S 118° E 24
 S 23° E 23
 South 12
 1104 pds



Situate in Allegheny County on the East side of French Creek
 containing four hundred and thirty nine acres and one hundred
 and fifty four p^{ts} and allowance of Six p. Cent &c. Surveyed the
 8th day of May 1791 In pursuance of an Improvement

Wm Power D^y S^r

To Daniel Brodhead Esq^r
 Surveyor General

Altered

IN TESTIMONY that the above is a copy of the original remaining on file in the
 Department of Internal Affairs of Pennsylvania, made con-
 formably to an Act of Assembly approved the 16th day of
 February, 1833, I have hereunto set my Hand and caused
 the Seal of said Department to be affixed at Harrisburg, this
 twenty third day of January 1895.

Wm B. Brown
 Secretary of Internal Affairs.